



GLOBAL
Diving & Salvage, Inc.

FOR MORE INFORMATION
WWW.GDIVING.COM
1 (800) 441-DIVE

SATURATION SYSTEM III

IMCA COMPLIANT
6 MAN - 1,000 fsw

Technical Specifications



Global Diving & Salvage, Inc.

SATURATION SYSTEM III COMPONENTS

Global Diving & Salvage's SAT III is a 6-man saturation diving system designed with either a two man side mate – end launch bell or a three man top mate – side launch bell. The system is certified to 1,000 fsw and is equipped with a 10-man Hyperbaric Rescue Chamber (HRC), Bell Launch and Recovery System (LARS) with redundant recovery capabilities for safety, and gas reclaim system for efficient operation. The International Marine Contractor's Association (IMCA) compliant system is of a modular design providing for multiple bell launch / recovery and footprints to suite the required placement of components.

Primary Living Chamber (6 Man/Single Lock)

- Bunk beds w/ fire retardant mattresses
- Medical lock w/ pressure interlock
- Equipment lock w/ pressure interlock
- Scott BIBs w/ overboard dumps (x 7)
- HCU with two carbon dioxide scrubbers (x 2)
- Auxiliary carbon dioxide scrubbers (x 4)
- Lung powered scrubbers (x 7)
- Wired communications
- Sound powered phone

Transfer Lock

- Side or overhead hatch for transfer into bell
- Shower, toilet, washbasin
- Scott BIBs w/ overboard dumps (x 2)
- HCU with two carbon dioxide scrubbers
- Auxiliary carbon dioxide scrubbers (x 2)
- Wired communications
- Sound powered phone

Hyperbaric Rescue Chamber (8 Man Rescue)

- 72 hours autonomous support for 8 men
- HeO₂ & O₂ reserve cylinders
- Sound powered communications
- AODC emergency signage
- Battery power reserves
- Tow hitch and lifting slings

Living Compartment

- Medical lock w/ pressure interlock
- Bunk beds w/ fire retardant mattresses
- Jump seats & harnesses (x 8)
- O₂ make-up injector system
- Scott BIBs w/ overboard dumps (x 9)
- HCU with two carbon dioxide scrubbers
- Auxiliary carbon dioxide scrubber
- Lung powered scrubbers (x 9)
- Wired communications

Hyperbaric Rescue Chamber con't.

Bathroom Facilities/Entrance Lock

- Shower, toilet, washbasin
- HCU with carbon dioxide scrubber
- Auxiliary carbon dioxide scrubber
- Wired communications

Dive Bell System (2 Man)

Launch System

- Primary bell hydraulic winch
- Bell clump weight hydraulic winch
- Hydraulic powered umbilical sheave
- Bell umbilical (1,000ft) w/ basket
- Dual HPU (50HP each)

Bell

- 12 hours autonomous support
- Primary diver umbilical (165ft)
- Stand-by diver umbilical (175ft)
- Gas & O₂ reserve cylinders
- Divex gas reclaim system
- Divex reclaim hats (x 2)
- Bell gas control panel
- O₂ make-up injector system
- Scott BIBs (x 2)
- Carbon dioxide scrubbers (x 2)
- Lung powered scrubbers (x 2)
- Thru-water communications
- Wired communications
- Sound powered phone
- Battery power reserves
- Bell heater
- KMB 18B band mask
- Helmet mounted color video and light

Dive/Saturation Control Van

Dive Control Station

- Bell gas control panel
- Divex reclaim booster panel
- O₂ analyzers (x 2) & CO₂ analyzer
- Diver communication panel
- Diver depth monitoring panel
- 24 volt bell power systems (x 2)
- Video monitor systems (x 2)
- DVD & DVR video recording
- VHF & UHF Radios
- Loud hailer (150 watt)

Saturation Control

- Gas distribution panel
- Chamber control panels (x 4)
- Treatment gas panel
- Analyzation panel
- O₂ analyzers (x 3) & CO₂ analyzers (x 3)
- Chamber communication systems (x 2)
- Chamber video monitoring system
- Electrical control switching panel
- 24 volt chamber power systems (x 2)

HRC Intervention Van

- Gas & O₂ reserve cylinders
- Gas distribution system
- O₂ make-up system
- O₂ and CO₂ analyzation system
- Depth monitoring system
- Environmental system
- Emergency umbilical for HRC
- Soda Sorb capable for diver desat

Environmental Control Van

- External environmental control units (x 2)
- Potable hot / cold water systems
- SAT tech workshop with spares locker

Divers Reclaim Van

- Divex electric gasmizer system
- Haskell booster pumps (x 2)

System Gas Reclaim

Scrubs and reprocess system gas to usable chamber gas for medlocks, equipment lock, bell trunk, etc.

Supporting Equipment

- Dive Locker
- Spares Van
- Electric immersion hot water unit (90kva)
- Auxiliary diesel hot water unit
- Electric 5120 diving compressor
- Surface diving station with LARS
- SL 37 surface diving hats (x 2)
- Deck leads for electrical and gas
- Rigging Equipment
- Optional SLS re-breather hats & backpacks

Power Distribution Van

Essential Power

- Primary: 200kw, 480v, 3 phase
- Back-up: 200kw, 480v, 3 phase
- Supports:
 - Dive/SAT Van, ECU Van
 - LARS' HPU
 - 5120 dive compressor, CAT pump
 - Raw water system

Nonessential Power

- 100kw, 480v, 3 phase
- Supports:
 - Tooling, welding, deck lighting

System Requirements

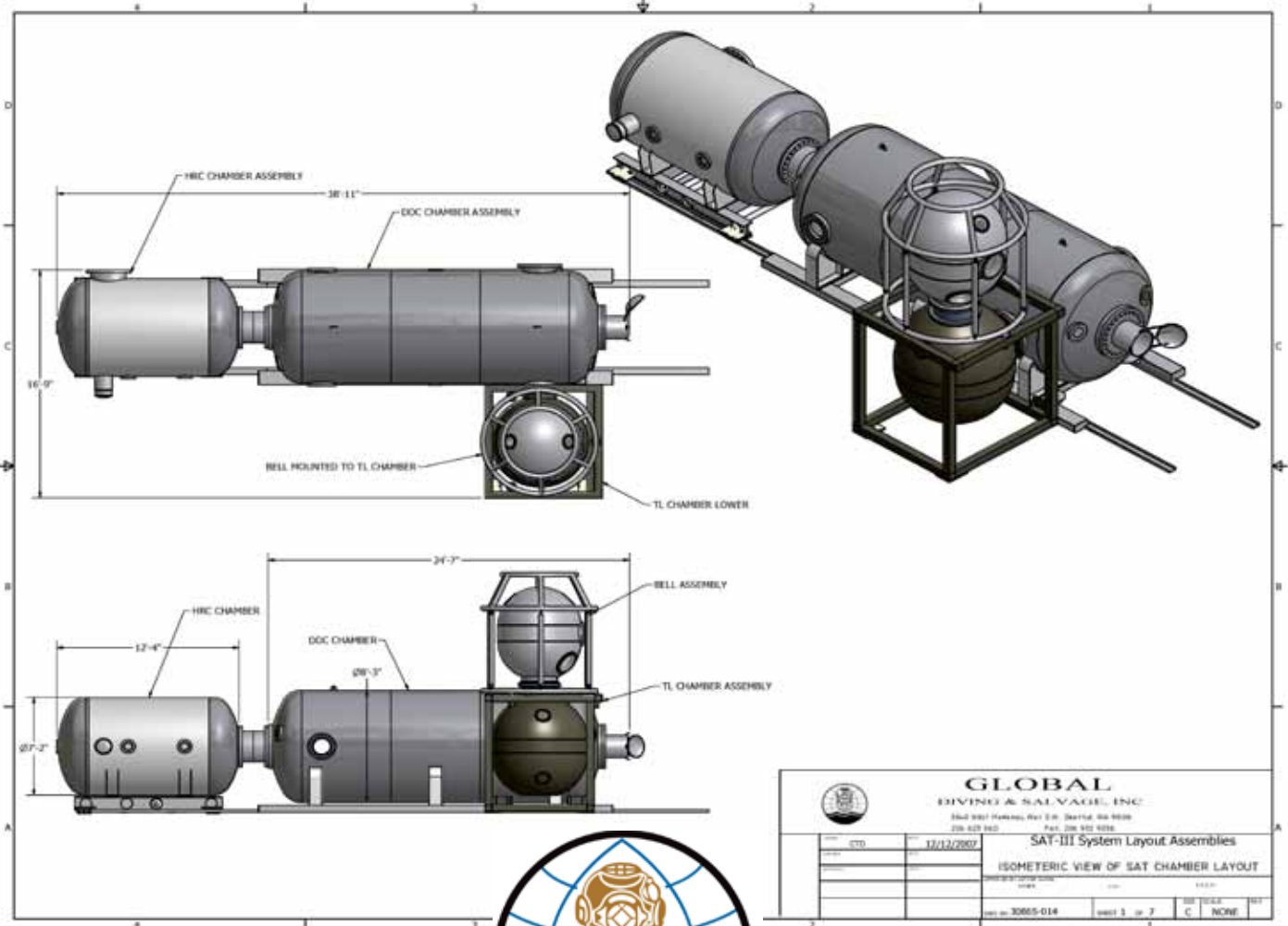
- Electric Power: 350kw, 480v, 60Hz
- Compressed Air: 120CFM, 110psi
- Seawater: 75GPM
- Freshwater: 3GPM



SATURATION SYSTEM III DIMENSIONS

Component	Length	Width	Height	Weight
Primary Living Chamber	25 ft	9 ft 10 in	9 ft 10 in	56,000 lbs
Transfer Lock	7 ft 5 in	8 ft 6 in	9 ft 1 in	14,000 lbs
Hyperbaric Rescue Chamber	15 ft	9 ft 8 in	9 ft	17,000 lbs
Dive Bell	9 ft	8 ft	11 ft 6 in	14,000 lbs
LARS Winch & Platform	11 ft	7 ft 6 in	7 ft	20,000 lbs
Dive/Saturation Control Van	20 ft	8 ft	8 ft	13,000 lbs
Environmental Control Unit	20 ft	8 ft	8 ft	13,600 lbs
Diver Reclaim Van	10 ft	8 ft	8 ft	6,500 lbs
Power Distribution Van	10 ft	8 ft	8 ft	7,000 lbs
System Reclaim Van	10 ft	8 ft	8 ft	9,000 lbs
Tool Van	20 ft	8 ft	8 ft	16,500 lbs
Gas Transfer Van	10 ft	8 ft	8 ft	9,500 lbs
Electric Diver Hot Water Unit	5 ft 5 in	4 ft 6 in	6 ft 3 in	2,000 lbs

* These dimensions are guidelines for the key components of this system only.



HEADQUARTERS

3840 W Marginal Way SW
Seattle, WA 98106

(206) 623-0621 Office
(206) 932-9036 Fax



GLOBAL
Diving & Salvage, Inc.

GULF OF MEXICO REGION

15375 Vantage Pkwy East
Houston, TX 77032

Office (281) 940-0021
Fax (281) 940-0027